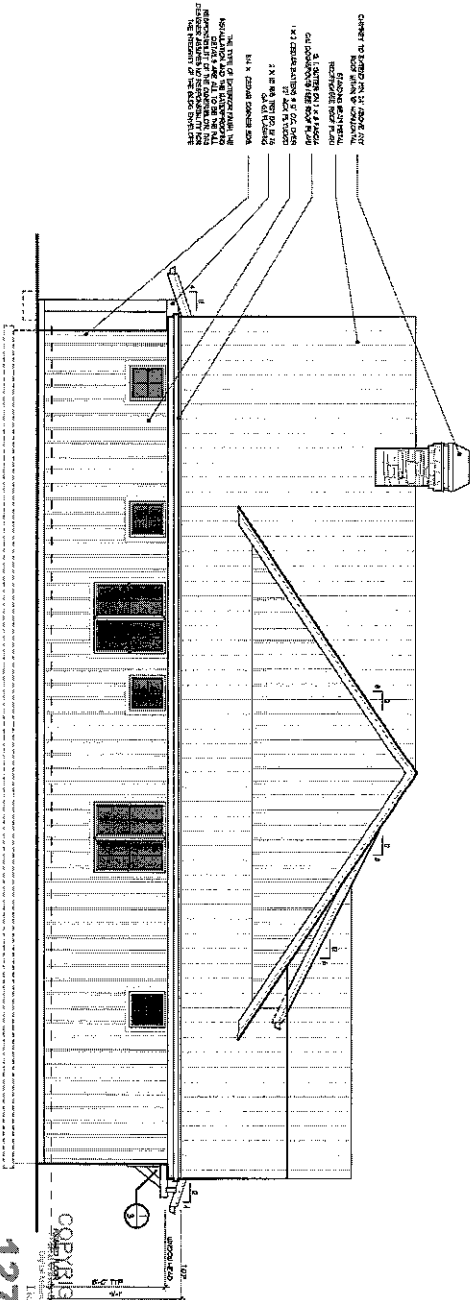


REAR ELEVATION
SCALE: 1/8" = 1'-0"



LEFT SIDE ELEVATION
SCALE: 1/8" = 1'-0"

OWNER TO VERIFY ALL DIMENSIONS
BEFORE CONSTRUCTION.

EXISTING ROOF SHALL
BE REMOVED AND REPLACED
WITH 1/2" OSB SHEATHING
ON JOISTS OR 1/2" OSB SHEATHING
ON CEILING RAFTERS FOR ROOF INSULATION.
2. IN ALL CASES, THE ROOF SHALL BE
A MINIMUM OF 12/12 PITCH.

ALL NEW ROOFING SHALL BE
INSTALLED OVER EXISTING ROOFING.
REMOVAL OF EXISTING ROOFING
SHALL BE THE RESPONSIBILITY OF THE
OWNER.

127346

COPYRIGHT NOTICE

127346

COMPASS © 2011 JOHN MANI LAMBERT DESIGN ARCHITECTS, INC.

FOR MORE INFORMATION, VISIT US AT
WWW.COMPASSARCHITECTS.COM

#4 SNOW LOAD	
MAIN FLOOR	155 LB/SQ FT
TOTAL AREA	1863 SQ FT
MAX. ROOF	175 LB/SQ FT
GARAGE AREA	174 LB/SQ FT

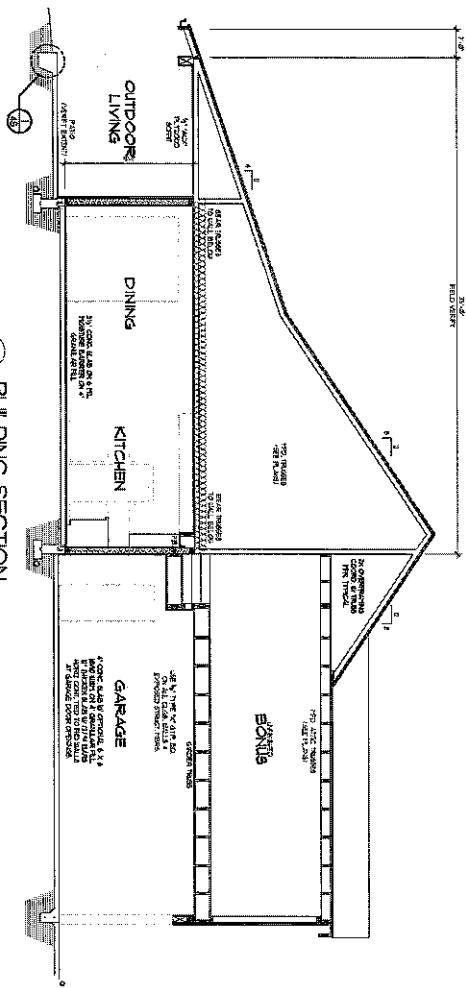
1152C
2

COMPASS ARCHITECTS, INC.
127346

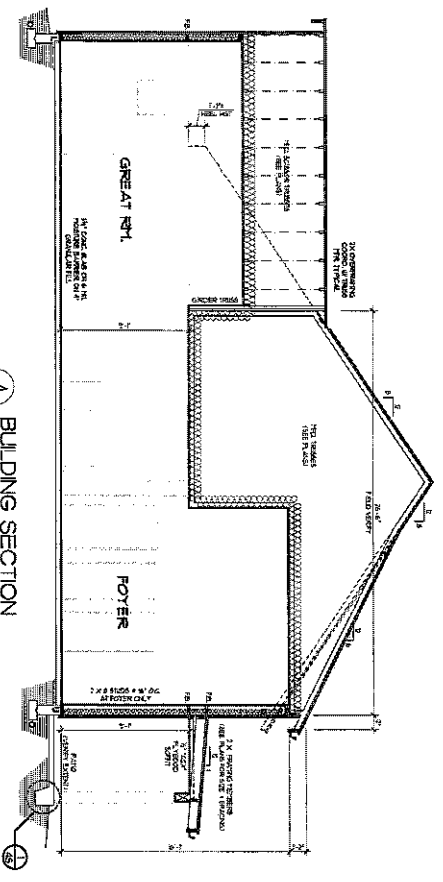


ENERGY ENVELOPE KEY

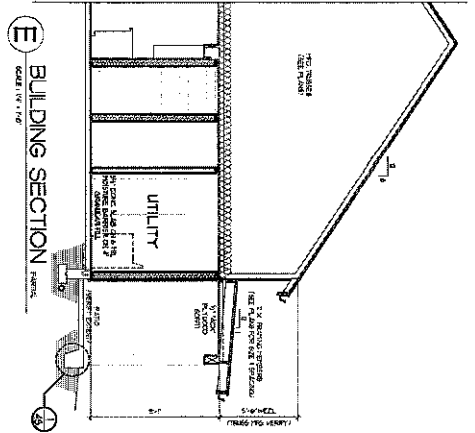
ROOF	R-19
WALLS	R-13
FLOORS	R-10
GLAZING	U-0.30
AIR LEAKAGE	0.5 ACH50



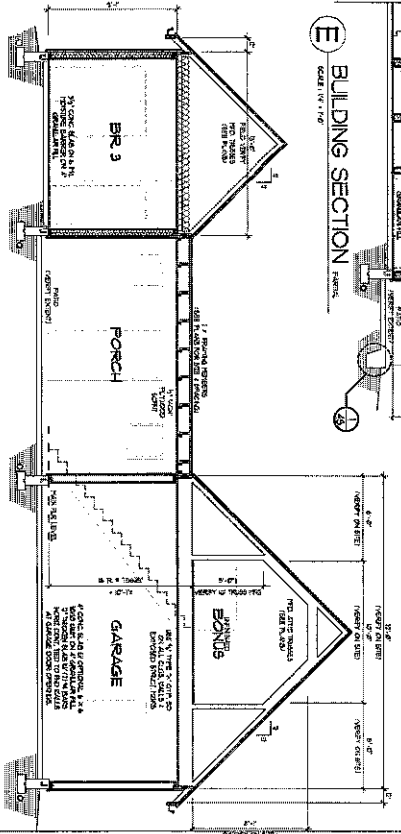
B BUILDING SECTION
SCALE: 1/4" = 1'-0"



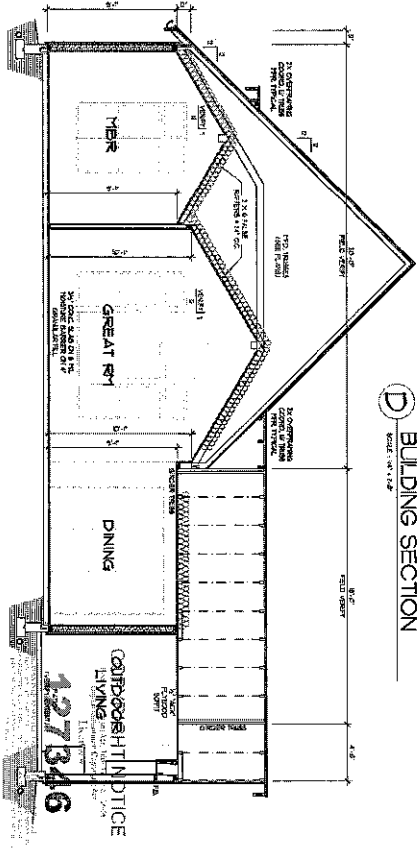
A BUILDING SECTION
SCALE: 1/4" = 1'-0"



E BUILDING SECTION
SCALE: 1/4" = 1'-0"



D BUILDING SECTION
SCALE: 1/4" = 1'-0"



C BUILDING SECTION
SCALE: 1/4" = 1'-0"

Copyright © 2011 AIA, INC. ALL RIGHTS RESERVED. 127846

11520	5	3M
BASE FLOOR	455 SQ. FT.	3M ENERGY LOADS
TOTAL AREA	509 SQ. FT.	
UNPAID BONUS	308 SQ. FT.	
GARAGE AREA	146 SQ. FT.	

PERMITTING INFORMATION

THIS SET OF PLANS IS THE PROPERTY OF HASTORD ARCHITECTURE, INC. IT IS TO BE USED ONLY FOR THE PROJECT AND SITE SPECIFICALLY IDENTIFIED HEREON. NO PART OF THIS SET OF PLANS IS TO BE REPRODUCED OR TRANSMITTED IN ANY FORM OR BY ANY MEANS, ELECTRONIC OR MECHANICAL, INCLUDING PHOTOCOPYING, RECORDING, OR BY ANY INFORMATION STORAGE AND RETRIEVAL SYSTEM, WITHOUT THE WRITTEN PERMISSION OF HASTORD ARCHITECTURE, INC.



ROOF DESIGN NOTES

1. ALL ROOFING SHALL BE INSTALLED IN ACCORDANCE WITH THE MANUFACTURER'S RECOMMENDATIONS AND THE NATIONAL ROOFING CONTRACTORS ASSOCIATION (NRCA) MANUAL. THE ROOF SHALL BE MAINTAINED IN GOOD CONDITION AT ALL TIMES. THE ROOF SHALL BE REPAIRED OR REPLACED AS NECESSARY TO MAINTAIN THE INTEGRITY OF THE ROOF SYSTEM.

2. ALL ROOFING SHALL BE INSTALLED OVER A SUFFICIENTLY STRENGTH ROOF DECK TO SUPPORT THE ROOFING AND THE DESIGN LOADS. THE ROOF DECK SHALL BE REINFORCED AS NECESSARY TO SUPPORT THE ROOFING AND THE DESIGN LOADS.

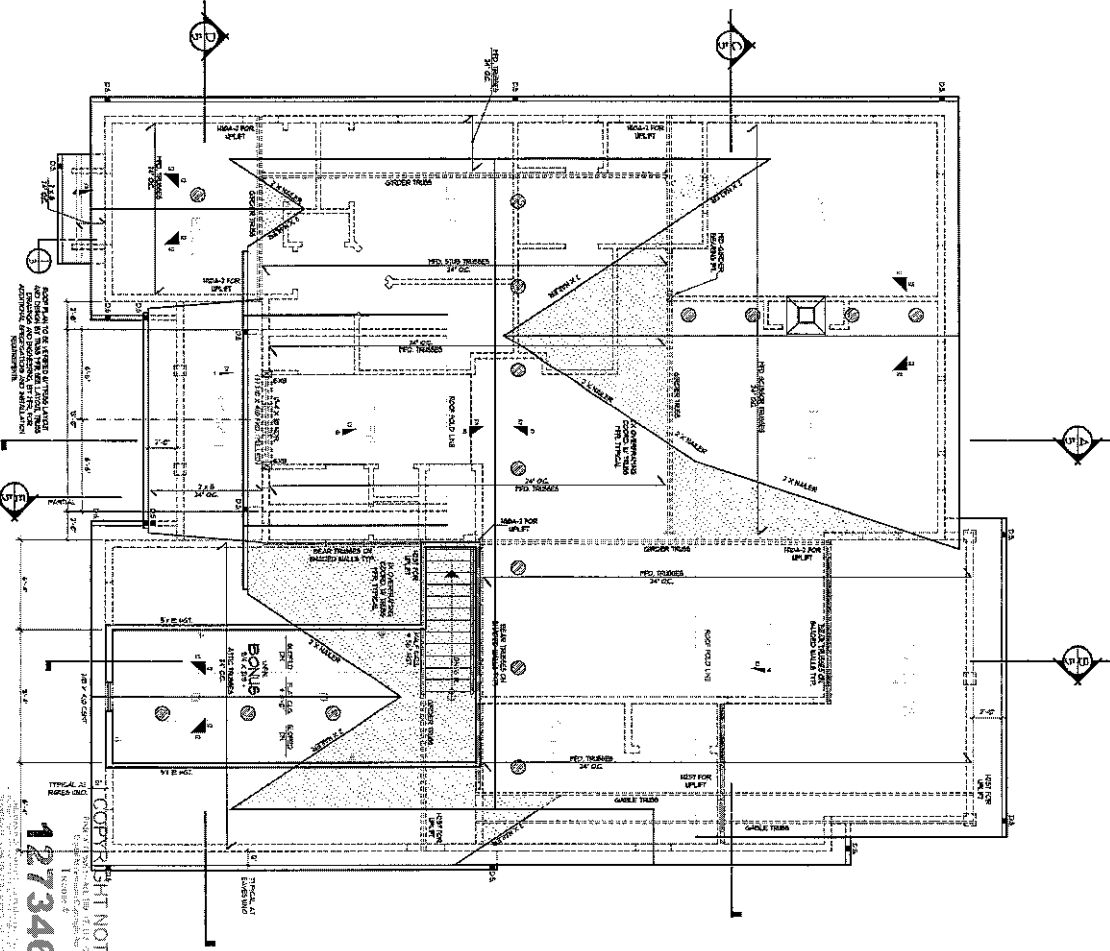
3. ALL ROOFING SHALL BE INSTALLED OVER A SUFFICIENTLY STRENGTH ROOF DECK TO SUPPORT THE ROOFING AND THE DESIGN LOADS. THE ROOF DECK SHALL BE REINFORCED AS NECESSARY TO SUPPORT THE ROOFING AND THE DESIGN LOADS.

4. ALL ROOFING SHALL BE INSTALLED OVER A SUFFICIENTLY STRENGTH ROOF DECK TO SUPPORT THE ROOFING AND THE DESIGN LOADS. THE ROOF DECK SHALL BE REINFORCED AS NECESSARY TO SUPPORT THE ROOFING AND THE DESIGN LOADS.

5. ALL ROOFING SHALL BE INSTALLED OVER A SUFFICIENTLY STRENGTH ROOF DECK TO SUPPORT THE ROOFING AND THE DESIGN LOADS. THE ROOF DECK SHALL BE REINFORCED AS NECESSARY TO SUPPORT THE ROOFING AND THE DESIGN LOADS.

LEGEND

NO.	DESCRIPTION	DETAIL
1	2" X 4" JOIST (SPACING 16" O.C.)	101
2	1/2" X 12" RAFTER (SPACING 24" O.C.)	102
3	1/2" X 12" RAFTER (SPACING 24" O.C.)	103
4	1/2" X 12" RAFTER (SPACING 24" O.C.)	104
5	1/2" X 12" RAFTER (SPACING 24" O.C.)	105
6	1/2" X 12" RAFTER (SPACING 24" O.C.)	106
7	1/2" X 12" RAFTER (SPACING 24" O.C.)	107
8	1/2" X 12" RAFTER (SPACING 24" O.C.)	108
9	1/2" X 12" RAFTER (SPACING 24" O.C.)	109
10	1/2" X 12" RAFTER (SPACING 24" O.C.)	110
11	1/2" X 12" RAFTER (SPACING 24" O.C.)	111
12	1/2" X 12" RAFTER (SPACING 24" O.C.)	112
13	1/2" X 12" RAFTER (SPACING 24" O.C.)	113
14	1/2" X 12" RAFTER (SPACING 24" O.C.)	114
15	1/2" X 12" RAFTER (SPACING 24" O.C.)	115
16	1/2" X 12" RAFTER (SPACING 24" O.C.)	116
17	1/2" X 12" RAFTER (SPACING 24" O.C.)	117
18	1/2" X 12" RAFTER (SPACING 24" O.C.)	118
19	1/2" X 12" RAFTER (SPACING 24" O.C.)	119
20	1/2" X 12" RAFTER (SPACING 24" O.C.)	120
21	1/2" X 12" RAFTER (SPACING 24" O.C.)	121
22	1/2" X 12" RAFTER (SPACING 24" O.C.)	122
23	1/2" X 12" RAFTER (SPACING 24" O.C.)	123
24	1/2" X 12" RAFTER (SPACING 24" O.C.)	124
25	1/2" X 12" RAFTER (SPACING 24" O.C.)	125
26	1/2" X 12" RAFTER (SPACING 24" O.C.)	126
27	1/2" X 12" RAFTER (SPACING 24" O.C.)	127
28	1/2" X 12" RAFTER (SPACING 24" O.C.)	128
29	1/2" X 12" RAFTER (SPACING 24" O.C.)	129
30	1/2" X 12" RAFTER (SPACING 24" O.C.)	130
31	1/2" X 12" RAFTER (SPACING 24" O.C.)	131
32	1/2" X 12" RAFTER (SPACING 24" O.C.)	132
33	1/2" X 12" RAFTER (SPACING 24" O.C.)	133
34	1/2" X 12" RAFTER (SPACING 24" O.C.)	134
35	1/2" X 12" RAFTER (SPACING 24" O.C.)	135
36	1/2" X 12" RAFTER (SPACING 24" O.C.)	136
37	1/2" X 12" RAFTER (SPACING 24" O.C.)	137
38	1/2" X 12" RAFTER (SPACING 24" O.C.)	138
39	1/2" X 12" RAFTER (SPACING 24" O.C.)	139
40	1/2" X 12" RAFTER (SPACING 24" O.C.)	140
41	1/2" X 12" RAFTER (SPACING 24" O.C.)	141
42	1/2" X 12" RAFTER (SPACING 24" O.C.)	142
43	1/2" X 12" RAFTER (SPACING 24" O.C.)	143
44	1/2" X 12" RAFTER (SPACING 24" O.C.)	144
45	1/2" X 12" RAFTER (SPACING 24" O.C.)	145
46	1/2" X 12" RAFTER (SPACING 24" O.C.)	146
47	1/2" X 12" RAFTER (SPACING 24" O.C.)	147
48	1/2" X 12" RAFTER (SPACING 24" O.C.)	148
49	1/2" X 12" RAFTER (SPACING 24" O.C.)	149
50	1/2" X 12" RAFTER (SPACING 24" O.C.)	150
51	1/2" X 12" RAFTER (SPACING 24" O.C.)	151
52	1/2" X 12" RAFTER (SPACING 24" O.C.)	152
53	1/2" X 12" RAFTER (SPACING 24" O.C.)	153
54	1/2" X 12" RAFTER (SPACING 24" O.C.)	154
55	1/2" X 12" RAFTER (SPACING 24" O.C.)	155
56	1/2" X 12" RAFTER (SPACING 24" O.C.)	156
57	1/2" X 12" RAFTER (SPACING 24" O.C.)	157
58	1/2" X 12" RAFTER (SPACING 24" O.C.)	158
59	1/2" X 12" RAFTER (SPACING 24" O.C.)	159
60	1/2" X 12" RAFTER (SPACING 24" O.C.)	160
61	1/2" X 12" RAFTER (SPACING 24" O.C.)	161
62	1/2" X 12" RAFTER (SPACING 24" O.C.)	162
63	1/2" X 12" RAFTER (SPACING 24" O.C.)	163
64	1/2" X 12" RAFTER (SPACING 24" O.C.)	164
65	1/2" X 12" RAFTER (SPACING 24" O.C.)	165
66	1/2" X 12" RAFTER (SPACING 24" O.C.)	166
67	1/2" X 12" RAFTER (SPACING 24" O.C.)	167
68	1/2" X 12" RAFTER (SPACING 24" O.C.)	168
69	1/2" X 12" RAFTER (SPACING 24" O.C.)	169
70	1/2" X 12" RAFTER (SPACING 24" O.C.)	170
71	1/2" X 12" RAFTER (SPACING 24" O.C.)	171
72	1/2" X 12" RAFTER (SPACING 24" O.C.)	172
73	1/2" X 12" RAFTER (SPACING 24" O.C.)	173
74	1/2" X 12" RAFTER (SPACING 24" O.C.)	174
75	1/2" X 12" RAFTER (SPACING 24" O.C.)	175
76	1/2" X 12" RAFTER (SPACING 24" O.C.)	176
77	1/2" X 12" RAFTER (SPACING 24" O.C.)	177
78	1/2" X 12" RAFTER (SPACING 24" O.C.)	178
79	1/2" X 12" RAFTER (SPACING 24" O.C.)	179
80	1/2" X 12" RAFTER (SPACING 24" O.C.)	180
81	1/2" X 12" RAFTER (SPACING 24" O.C.)	181
82	1/2" X 12" RAFTER (SPACING 24" O.C.)	182
83	1/2" X 12" RAFTER (SPACING 24" O.C.)	183
84	1/2" X 12" RAFTER (SPACING 24" O.C.)	184
85	1/2" X 12" RAFTER (SPACING 24" O.C.)	185
86	1/2" X 12" RAFTER (SPACING 24" O.C.)	186
87	1/2" X 12" RAFTER (SPACING 24" O.C.)	187
88	1/2" X 12" RAFTER (SPACING 24" O.C.)	188
89	1/2" X 12" RAFTER (SPACING 24" O.C.)	189
90	1/2" X 12" RAFTER (SPACING 24" O.C.)	190
91	1/2" X 12" RAFTER (SPACING 24" O.C.)	191
92	1/2" X 12" RAFTER (SPACING 24" O.C.)	192
93	1/2" X 12" RAFTER (SPACING 24" O.C.)	193
94	1/2" X 12" RAFTER (SPACING 24" O.C.)	194
95	1/2" X 12" RAFTER (SPACING 24" O.C.)	195
96	1/2" X 12" RAFTER (SPACING 24" O.C.)	196
97	1/2" X 12" RAFTER (SPACING 24" O.C.)	197
98	1/2" X 12" RAFTER (SPACING 24" O.C.)	198
99	1/2" X 12" RAFTER (SPACING 24" O.C.)	199
100	1/2" X 12" RAFTER (SPACING 24" O.C.)	200



ROOF FRAMING PLAN

IF LATENT ENGINEERING IS REQUIRED, REFER TO ENGINEERING SHEETS FOR ANTI-VIBRATION SPECIFICATIONS

127346

COPYRIGHT NOTICE

THIS DRAWING IS THE PROPERTY OF THE ENGINEER AND IS NOT TO BE REPRODUCED OR TRANSMITTED IN ANY FORM OR BY ANY MEANS, ELECTRONIC OR MECHANICAL, INCLUDING PHOTOCOPYING, RECORDING, OR BY ANY INFORMATION STORAGE AND RETRIEVAL SYSTEM, WITHOUT THE WRITTEN PERMISSION OF THE ENGINEER.

	1152C 6 SM	MAIN FLOOR: 855 SQ. FT. TOTAL AREA: 855 SQ. FT.	2x4 SNOW LOAD
	UNPA BONUS: 354 SQ. FT. GARAGE AREA: 741 SQ. FT.	© 2021 HASTORD ENGINEERING ASSOCIATES, INC. ALL RIGHTS RESERVED.	HASTORD ENGINEERING ASSOCIATES, INC. 1000 W. HASTORD DRIVE, SUITE 100 HASTORD, NC 27527 (919) 486-1111 WWW.HASTORDENGINEERING.COM

